

2.1 - Technical architecture

This document describes the architecture of the moveon software, including the moveonline online modules.

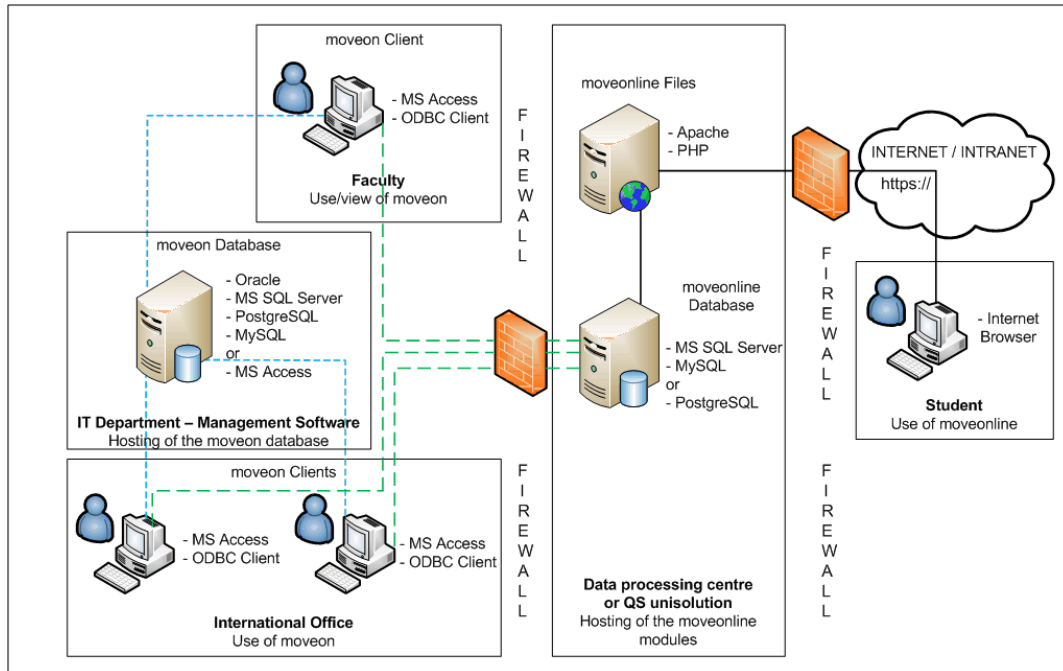


Fig. 1: moveon architecture

1- moveon management module

The moveon management module is used for managing international relations data. It can be used in parallel by multiple users and comprises two elements:

- The moveon database, containing all the data managed by the International Office. This database is normally hosted on a database server by your institution's IT management department. A number of different database types can be used (Oracle, MS SQL Server, PostgreSQL, MySQL). An MS Access database hosted on a file server can also be used.
- The moveon client, the interface allowing staff in the International Office to manage or view the data. This client is installed locally on each workstation. MS Access must be pre-installed on each workstation. The client can also be installed in individual faculties of the institution for decentralised use.

Data is exchanged between the moveon clients and the moveon database via an ODBC connection (except where an MS Access database is used). This connection requires the appropriate connection driver to be installed on each workstation.

2- moveonline online modules

The moveonline online modules allow online applications by students or online publication of data. These modules can be accessed via the internet or intranet. They can be hosted either by the IT department which manages your institution's website or by QS unisolution.

The moveonline application consists of PHP files installed on a web server and a database installed on a database server. A number of different database types can be used (MS SQL Server, PostgreSQL, MySQL).

The exchange of data between the moveon clients and the moveonline database to configure these modules or to import application data takes place via an ODBC connection. This connection requires the appropriate connection driver to be installed on each workstation.